

# CAB'S RESPONSE TO COVID-19



The COVID-19 pandemic has had major economic and health impacts in our community. As a front-line service provider, Santa Cruz County Community Action Board, Inc. (CAB) witnessed the magnitude of the impacts on our most vulnerable communities, including undocumented immigrants. The unprecedented demand for services exposed the inequities and accessibility issues in the broader system of care. There is an urgent need to redesign the system, by infusing justice, equity and ensuring equal access. Housing, immigrant needs, and food insecurity are major concerns and below we explore where we are, what we want to see for our communities, and how we can get there.



## NEW CAB RESOURCES TO ADDRESS THE COVID-19 RESPONSE

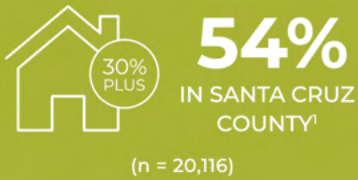
Between 2019 and 2020, CAB has experienced shifts in private and government funding, including new funding for COVID-19 response. This funding has been used for direct client assistance, COVID-19 PPE & office needs, support staffing, and food augmentation.



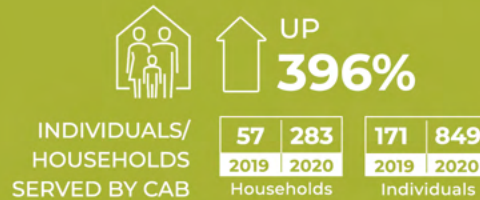
## HOUSING, EVICTIONS & HOMELESSNESS

Issues of housing insecurity have only magnified during COVID-19, causing major increases in calls for rental assistance, eviction prevention, and homeless support.

### HOUSEHOLDS SPENDING MORE THAN 30% ON HOUSING



### RENTAL ASSISTANCE DURING COVID-19<sup>2</sup>



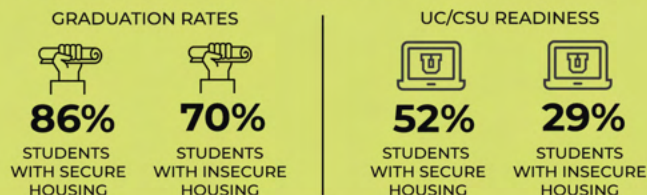
## Our vision for our community

- Good quality, affordable housing available for all
- Housing that supports multi-generational living, and an end to overcrowded households
- Stable housing regardless of immigration status
- Improved academic performance among housing-insecure students

## How do we get there?

- Increase funding to address homelessness/overcrowding and long-term, equitable rental assistance
- Address legal loopholes that contribute to inequities and increase legal eviction protections and housing rights education
- Ensure zoning promotes creative, affordable housing options including workforce housing
- Increase public transportation and accessibility to work, school and housing

### Student Educational Outcomes for California, 2018-19<sup>3</sup>

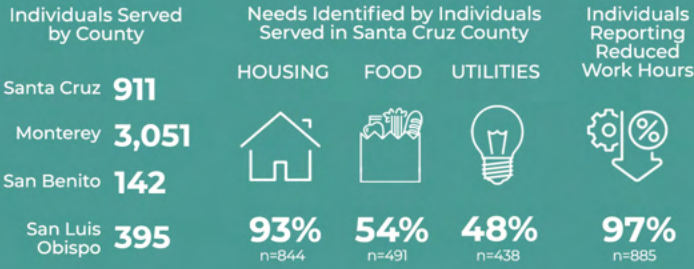


1. United States Census Bureau. (2020). 2019 American Community Survey 1-year estimates  
 2. Community Action Board of Santa Cruz County, Inc. (2020)  
 3. Bishop, J.P., Camargo Gonzalez, L., Rivera, E. (2020). State of Crisis: Dismantling Student Homelessness in California. Center for the Transformation of Schools, School of Education & Information Studies, University of California, Los Angeles.

# VULNERABILITY DUE TO IMMIGRATION STATUS

Vulnerability of our immigrant communities has intensified during COVID-19, presenting increased need for housing supports, employment services, and other no/low barrier supports.

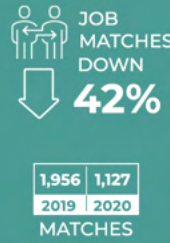
## INDIVIDUALS SERVED BY CAB WITH DRAI\* FUNDING<sup>4</sup>



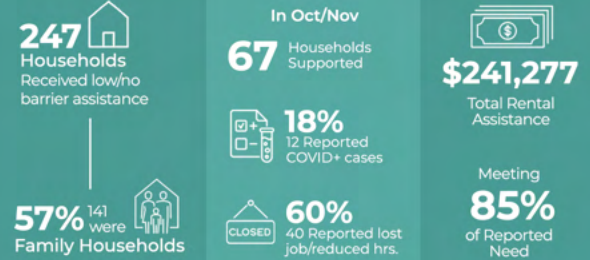
\*Disaster Relief Assistance for Immigrants - unrestricted funding amounts: \$500 for individuals and \$1,000 maximum per household for direct assistance

## DAY WORKER CENTER<sup>5</sup>

Covid-19 Impact



## NEW LOW/NO BARRIER RENTAL ASSISTANCE FOR UNDOCUMENTED IMMIGRANTS DURING COVID-19<sup>6</sup>



\*undocumented, no lease, and no federal assistance individuals

In 2017, Santa Cruz County undocumented immigrants paid

**\$21** MILLION IN STATE AND LOCAL TAXES<sup>7</sup>

**DESPITE PAYING MORE THAN \$20 MILLION PER YEAR IN STATE AND LOCAL TAXES, SANTA CRUZ COUNTY'S TAX-PAYING UNDOCUMENTED IMMIGRANTS & MIXED STATUS FAMILIES WERE NOT ELIGIBLE TO RECEIVE STIMULUS CHECKS.**

A study of CA households that received 2020 stimulus checks, found stimulus money was spent on expenses that closely match the reported identified needs of Santa Cruz County's undocumented immigrant community.



## Our vision for the community

- The immigrant community is honored as an asset
- Equitable, accessible services and systems (public health, etc.) that improve the health and safety of all
- Increased belonging and community connectedness
- Arts and culture are valued

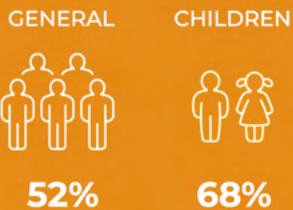
## How do we get there?

- Promote information on how to access financial supports and make financial supports available to all taxpayers, including undocumented immigrants
- Share local data and stories to build community's understanding of local struggles and value of the contributions of the immigrant community
- Increase opportunity and participation in civic engagement activities, including voting
- Increase investment in services and economic development to strengthen immigrant community

# FOOD INSECURITY

Food insecurity has worsened as a result of COVID-19, creating huge needs for increased food distribution and client support.

## PROJECTED INCREASE IN FOOD INSECURITY 2018 vs. 2020<sup>8</sup>



## INCREASED NEED FOR FOOD DISTRIBUTION BY CAB DURING COVID-19<sup>10</sup>

CAB FOOD DISTRIBUTION: JULY 2019 VS. JULY 2020



CAB SUPPORT AT OTHER DISTRIBUTION CENTERS



## Our vision for the community

- Safety and better health for all
- Improved mental and physical health, including for farmworkers
- Increased and equitable access to local community-based agriculture

## How do we get there?

- Address financial barriers to accessing healthy foods
- Promote new and creative strategies for sourcing healthy news
- Create new, sustainable funding streams for healthy food strategies
- Continued relationships with partners

4. CAB of Santa Cruz County, Inc. (2020). Disaster Relief Assistance for Immigrants. 8. United States Census Bureau. (2020). Household Pulse Survey, Week 7.  
 5. CAB of Santa Cruz County, Inc. (2020). Day Worker Center of Santa Cruz County. 9. Gundersen, C., et al. Map the Meal Gap 2020: A Report on County and Congressional District Food Insecurity and County Food Cost in the United States in 2018. Feeding America, 2020.  
 6. CAB of Santa Cruz County, Inc. (2020). 10. CAB of Santa Cruz County, Inc. (2020).  
 7. Institute on Taxation and Economic Policy. (2020). 2017 State and Local Tax Contributions of Undocumented Californians: County-by-County Data.