

Families support each other through
strong and safe neighborhoods
and communities



STRONG & SAFE NEIGHBORHOODS

Children and youth in supportive communities and caring families are best positioned for future success.¹ Two-generation approaches recognize that the well-being of children and youth is intrinsically connected to the well-being of their parents and caregivers. Recognizing and addressing these needs in tandem offers a stronger chance to break the cycle of poverty.²



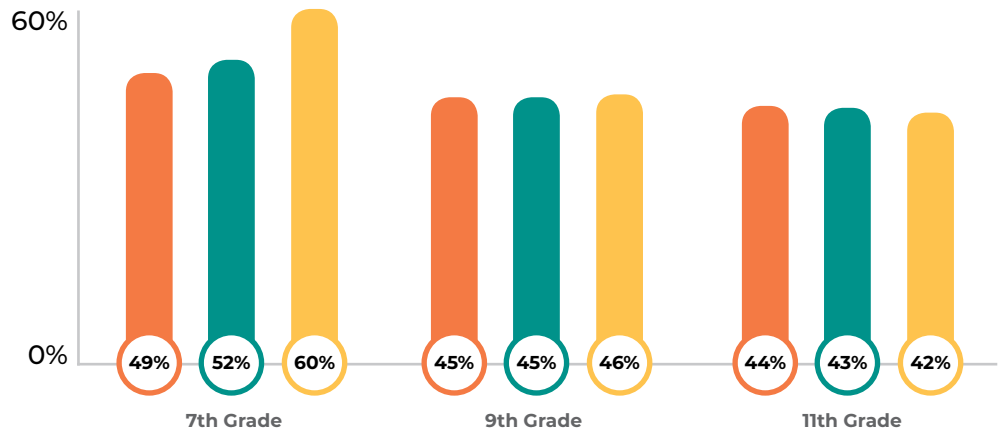
Students who report high levels of school connectedness feel they have adults at school who care about them both as learners and as individuals.³



Youth Connectedness

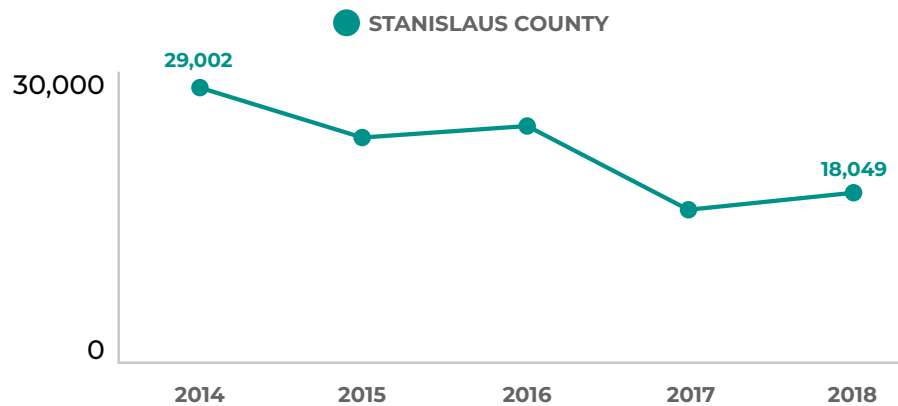
STUDENTS WHO REPORTED HIGH LEVELS OF SCHOOL CONNECTEDNESS⁴

- 2011-13
- 2013-15
- 2015-17



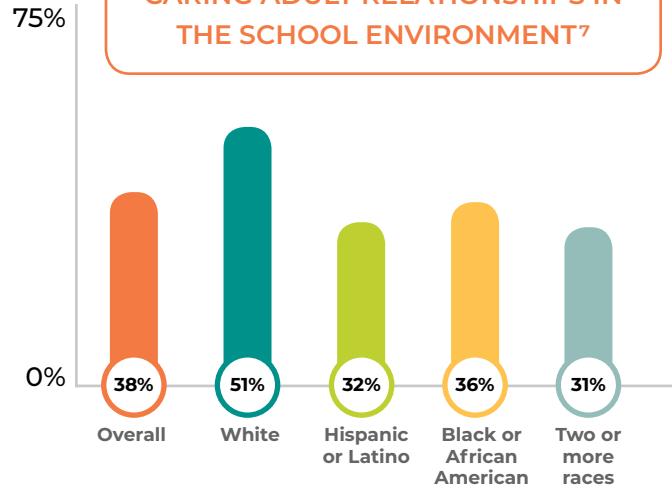
Disconnected youth are those individuals ages 16-24 who are both not in school and not working. Disconnected youth are removed from people, communities, and experiences that would allow them the opportunities to develop critical skills to achieve stability and success into adulthood and further into their futures.⁵

DISCONNECTED YOUTH⁶

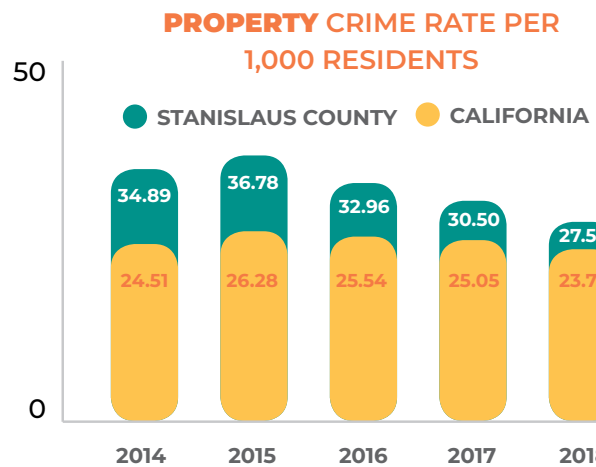
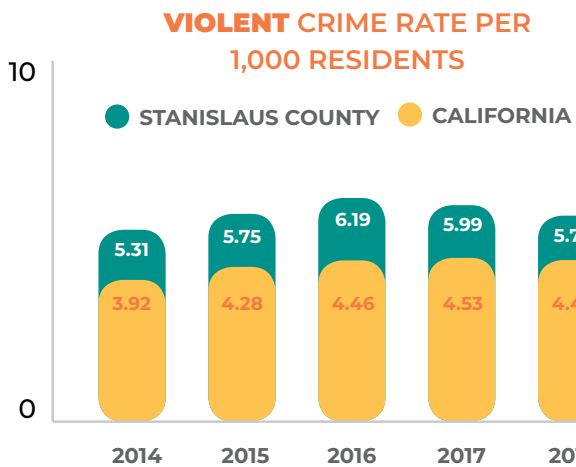
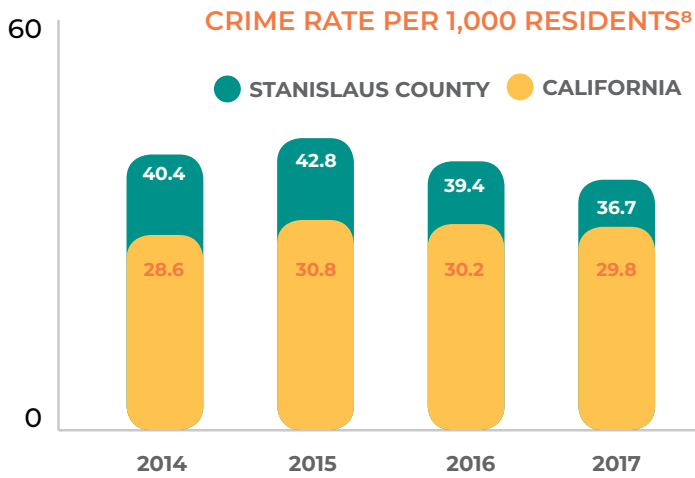




7TH GRADE STUDENTS WITH CARING ADULT RELATIONSHIPS IN THE SCHOOL ENVIRONMENT⁷



Community Safety



CRIME RATE PER 1,000 RESIDENTS⁹

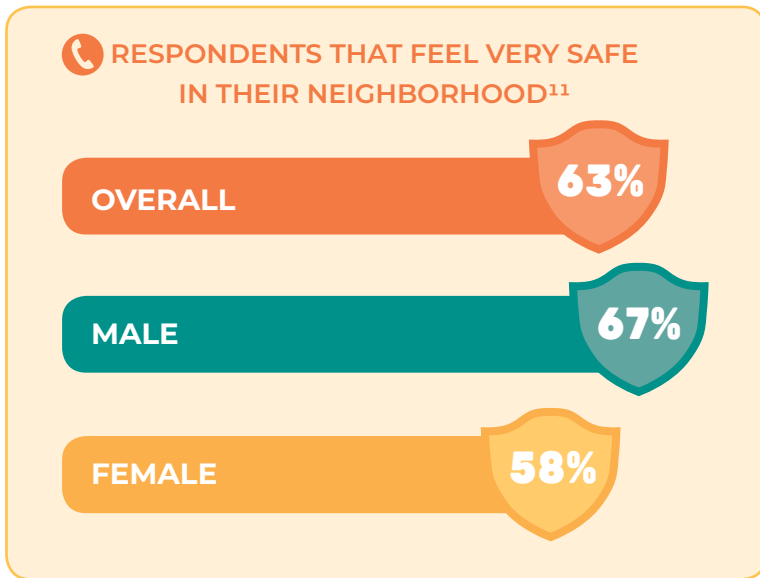
	2014	2015	2016	2017	2018
Violent Crime Rate[^]					
City of Ceres	3.10	2.58	3.89	4.65	4.64
City of Hughson	1.53	1.77	1.07	0.26	0.88
City of Modesto	8.53	9.66	9.98	9.77	8.92
City of Newman	2.35	1.50	2.93	1.16	1.65
City of Oakdale	1.99	1.96	2.41	1.35	2.05
City of Patterson	1.85	2.31	2.69	1.99	2.26
City of Riverbank	1.20	1.48	2.28	1.61	0.96
City of Turlock	5.24	5.29	5.27	6.06	5.68
City of Waterford	2.07	1.48	1.35	1.78	2.21
Unincorporated	3.27	3.49	4.12	3.42	3.71
Property Crime Rate[□]					
City of Ceres	33.89	33.96	26.73	32.82	29.52
City of Hughson	19.91	20.94	19.62	13.12	11.06
City of Modesto	43.74	48.30	44.24	39.88	36.21
City of Newman	14.78	13.74	13.71	12.65	11.66
City of Oakdale	38.01	39.20	30.65	25.48	23.70
City of Patterson	28.97	22.97	21.85	22.19	16.53
City of Riverbank	29.37	26.02	25.55	22.63	17.85
City of Turlock	35.34	38.24	35.60	31.14	30.18
City of Waterford	22.55	14.16	14.11	13.35	12.60
Unincorporated	18.71	18.81	15.98	14.17	14.80
Total Crime Rate[■]					
City of Ceres	37.06	36.62	30.76	37.67	34.55
City of Hughson	21.86	23.12	21.10	13.38	11.94
City of Modesto	52.56	58.27	54.53	49.94	45.43
City of Newman	17.14	15.24	16.73	13.81	13.31
City of Oakdale	39.99	41.43	33.19	26.96	25.93
City of Patterson	31.05	25.41	24.62	24.26	18.88
City of Riverbank	30.57	27.50	27.87	24.32	18.81
City of Turlock	41.04	43.95	41.07	37.68	36.47
City of Waterford	24.63	15.64	15.47	15.13	14.80
Unincorporated	22.12	22.43	20.23	17.69	18.67

[^] Violent crime rate includes: homicide, rape, robbery, and aggravated assault.

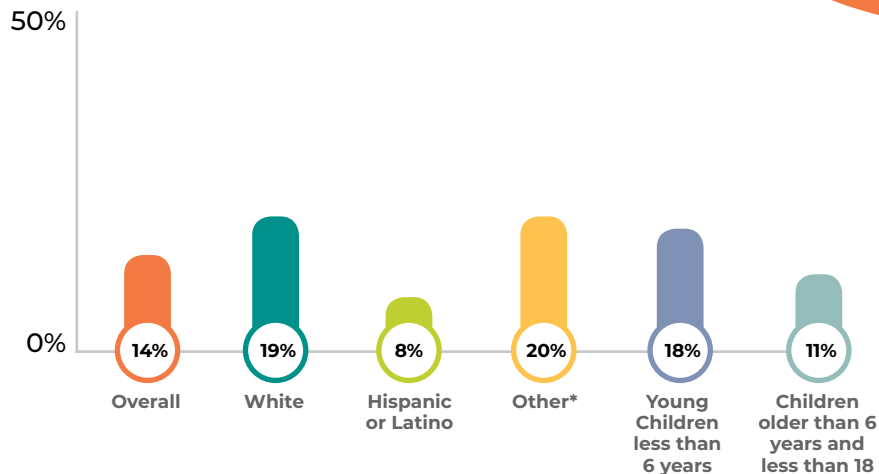
[□] Property crime rate includes: burglary, motor vehicle theft, and larceny-theft over \$400.

[■] Total crime rate includes: violent crime, property crime, and arson.

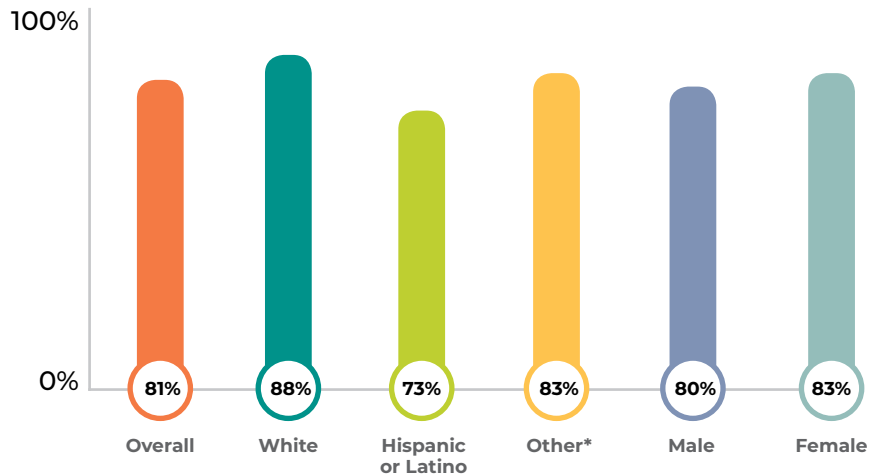
A safe community is a livable community in which people can go about their daily activity in an environment without fear or risk of harm or injury.¹⁰



HOUSEHOLD EXPERIENCE WITH CRIME IN THE LAST 12 MONTHS¹²



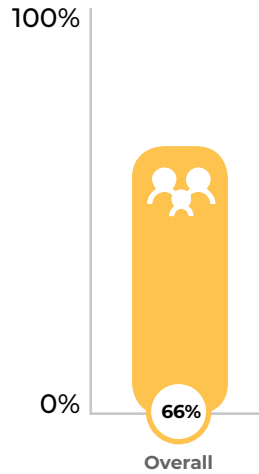
SOMEWHAT OR VERY CONCERNED ABOUT CRIME IN THE COMMUNITY¹³



Community Connectedness

RESPONDENTS WHO HAVE SOMEONE THEY CAN ALWAYS TURN TO WHEN THEY NEED HELP¹⁴

Note: Data shown does not include the breakdown by race/ethnicity, gender or age of children due to minimal difference among responses.



PARTICIPATION IN THE FOLLOWING ACTIVITIES DURING THE PAST 3 MONTHS...¹⁵

● OVERALL ● WHITE ● HISPANIC OR LATINO ● OTHER*

SPENT TIME SOCIALIZING WITH PEOPLE OUTSIDE OF MY HOME (PEOPLE WHO DO NOT LIVE WITH ME)



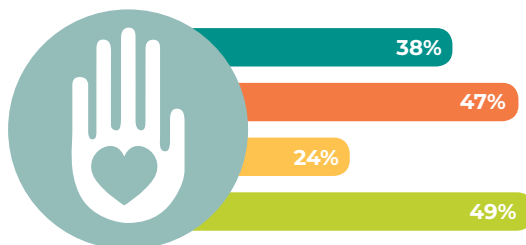
ATTENDED MEETINGS/ EVENTS RELATED TO MY CHILDS SCHOOL



PARTICIPATED IN FAITH/SPIRITUALITY BASED EVENTS



VOLUNTEERED WITH A LOCAL GROUP/ ORGANIZATION

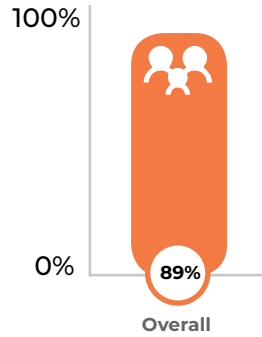


89% of survey respondents have someone they can confide in when needed.



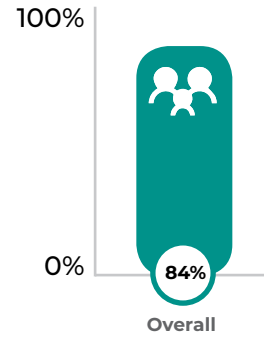
HOW MUCH DO YOU AGREE WITH THE FOLLOWING STATEMENTS:

I HAVE SOMEONE I CAN CONFIDE IN OR TALK TO WHEN I NEED SUPPORT¹⁶



Note: Data shown does not include the breakdown by race/ethnicity, gender or age of children due to minimal difference among responses.

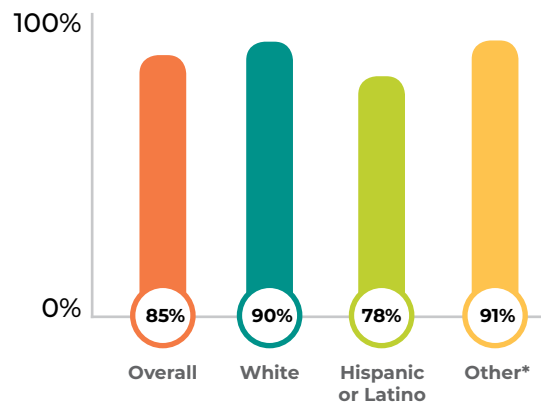
I HAVE SOMEONE I COULD CALL AT 3 AM IF I NEEDED HELP OR SUPPORT¹⁷



Note: Data shown does not include the breakdown by race/ethnicity, gender or age of children due to minimal difference among responses.



I KNOW SOMEONE WHO CAN SUGGEST HOW TO FIND HELP WITH A PERSONAL PROBLEM¹⁸

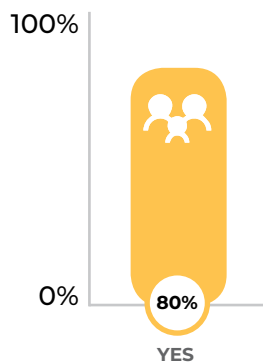




Well-being is a state of existence rooted in the social determinants of health, and is addressed across an individual's physical, mental, emotional, and spiritual needs.

Community Well-being

 I AM A MEMBER OF A COMMUNITY¹⁹



 AGREEMENT WITH THE FOLLOWING STATEMENTS ABOUT RESPONDENTS' COMMUNITY²⁰

EVERYONE CAN PARTICIPATE IN MAKING DECISIONS THAT WILL HELP US

82%

WE ACT TOGETHER TO MAKE POSITIVE CHANGE

84%

WE SUPPORT EACH OTHER

89%

I ASK FOR SUPPORT FROM OTHER COMMUNITY MEMBERS

68%

I OFFER SUPPORT TO OTHER COMMUNITY MEMBERS

86%

📞 RESPONDENTS THAT ARE CONCERNED ABOUT THE FOLLOWING ISSUES:²¹

HOUSING COSTS



JOBS THAT PAY ENOUGH TO SUPPORT A FAMILY



STRESS



- OVERALL
- WHITE
- HISPANIC OR LATINO
- OTHER*
- MALE
- FEMALE



Children who live in highly supportive neighborhoods have positive outcomes such as stronger connections with family, peers and community, and greater participation in out-of-school time programs, volunteering, and religious services.²²

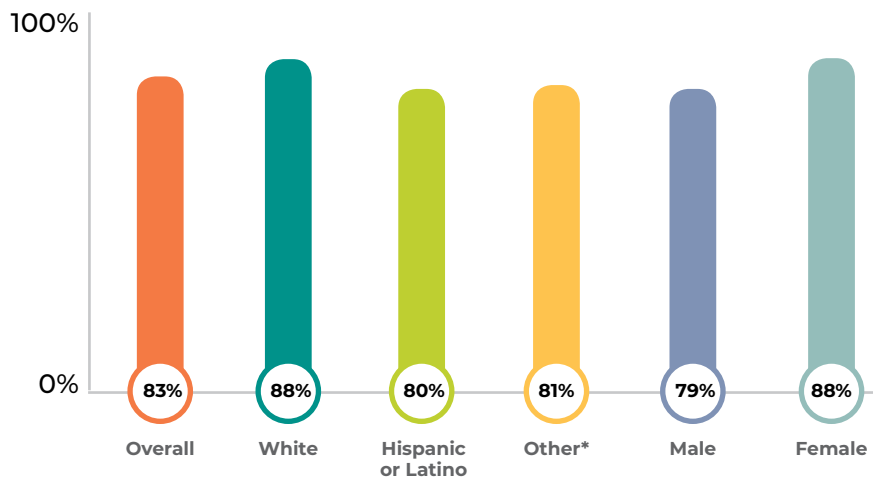


83%

of survey respondents are concerned about homelessness in their community



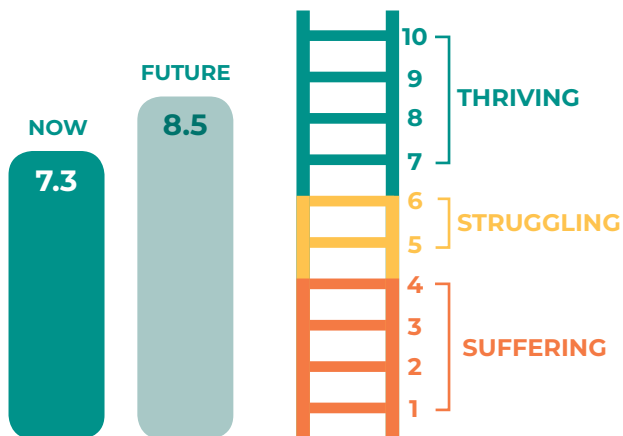
RESPONDENTS THAT ARE CONCERNED ABOUT HOMELESSNESS IN THEIR COMMUNITY²³



CANTRIL LADDER - NOW AND FUTURE



ON WHICH STEP OF THE LADDER WOULD YOU SAY YOU PERSONALLY FEEL YOU STAND AT THIS TIME? AND ON WHICH STEP DO YOU THINK YOU WILL STAND ABOUT **FIVE** YEARS FROM NOW?²⁴



THE CANTRIL LADDER

The Cantril Ladder is used across the globe to monitor well-being. Respondents are asked to think of a ladder, with the best possible life for them being a 10, and the worst possible life being a 0. They are then asked to rate their own current lives on that 0 to 10 scale.